

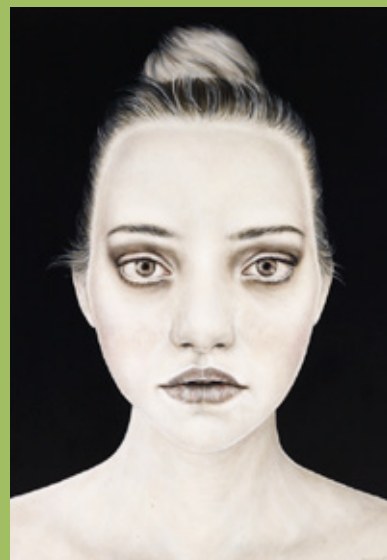


7-12  
2011

ART GALLERY OF  
NEW SOUTH WALES  
EDUCATION  
MAY – OCTOBER 2011  
[www.artgallery.nsw.gov.au](http://www.artgallery.nsw.gov.au)  
for the most up to date information

MAIN IMAGE

Installation view new contemporary galleries – Sol LeWitt *Wall drawing #1091: Arcs, circles and bands (room)* 2003, John Kaldor Family Collection, AGNSW © Estate of Sol LeWitt/AFIS. Licensed by Viscopy, Sydney.



Other exhibitions

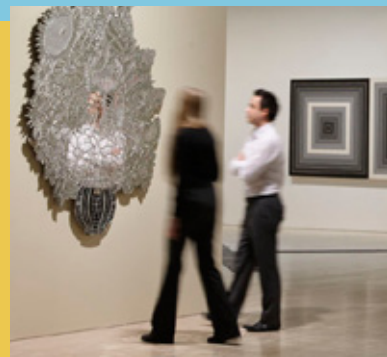
Unguided tours: Anne Landa Award for video and new media arts  
UNTIL 10 JULY

Sam Smith: *Cameraman*  
21 MAY – 14 AUGUST

Eikoh Hosoe: *theatre of memory*  
12 MAY – 7 AUGUST

Coming soon

Picasso: masterpieces from the Musée National Picasso, Paris  
12 NOVEMBER 2011 – 26 FEBRUARY 2012



FROM TOP

Matthew Doust *White cocoon* 2011, Archibald Prize finalist © the artist  
Shaun Gladwell *Approach to Mundi Mundi* 2007, John Kaldor Family Collection, AGNSW © Shaun Gladwell, courtesy Anna Schwartz Gallery, Melbourne/ Sydney  
2011 ARTEXPRESS study morning *Making the cut*, Domain Theatre  
Photo: Josh Raymond; installation view new contemporary galleries – Jeff Koons *Vase of flowers* 1988 (left) and Frank Stella *Untitled* 1965, John Kaldor Family Collection, AGNSW © Jeff Koons © Frank Stella/AFIS. Licensed by Viscopy, Sydney



Photography & place:

Australian landscape photography 1970s until now  
UNTIL 29 MAY

Exhibition discussion tour  
**Landscape through the lens**

Education materials: education kit + Art Chat: video dialogues between students and artists

art + soul

UNTIL 13 JUNE

Exhibition discussion tour

based on the exhibition themes: home and away, dreams and nightmares and bitter and sweet

Education materials: education kit + audio tours + ArtOnline: 15 'webisodes' relating to artists and ideas featured in the documentary series *art + soul*

Archibald Prize

UNTIL 26 JUNE

Study mornings

An eye on the prize Years 7-9: 11 May & 9 June • Years 10-12: 17 May & 14 June

Collection discussion tour

Portraiture in the collection

Art.Afterclass 4.30pm every Wednesday in May

Education materials: education kit & slideshow

New contemporary galleries

including the John Kaldor Family Gallery

OPENS 21 MAY

Study mornings

John Kaldor speaks Years 7-12: 7 June

What is contemporary art? Years 7-12: 16 June, 27 July, 9 August, 8 September, 20 October

Collection discussion tour

Understanding the contemporary

Art.Afterclass 4.30pm every Wednesday in June

Education materials: education kit & slide show + audio tours

Tracey Moffatt: Up in the sky

21 MAY – 18 SEPTEMBER

Study mornings

The art practice of Tracey Moffatt Years 10-12: 28 & 29 July

Education materials: collection notes

The poetry of drawing:

Pre-Raphaelite designs, studies and watercolours

18 JUNE – 4 SEPTEMBER

Exhibition discussion tour

The art of drawing

Themed drawing workshops

in conjunction with the Art After Hours program Exclusive to booked school groups from 4-5.30pm.

For general public from 6-8pm every Wednesday in July.

Education materials: collection notes

David Aspen: the colour of music and place

28 JULY – 4 SEPTEMBER

Education materials: collection notes

The mad square: modernity in German art 1910-37

6 AUGUST – 6 NOVEMBER

Study mornings

The mad square Years 10-12: 6, 14 & 22 September

Exhibition discussion tour

Exploring modernity in German Art

Education materials: education kit including German language worksheets

Education tours

booked on demand

Exhibition discussion tours

focusing on artworks in the temporary exhibitions

Years 7-12 • 1 hour • \$165 per group of 15 or less

Collection discussion tours

focusing on artworks in the collection

Years 7-12 • 1 hour • \$165 per group of 15 or less

Design your own visit

Custom-make your tour or workshop by choosing your topic, collection and format from a range of options and ideas.

Exhibition programs

please check details above

Study mornings

lectures in the theatre

10.30 – 11.30am • Years 7 – 12 • 1 hour • \$3 per student

or \$8 per student with exhibition entry

Art.Afterclass

floortalks led by educators

Wednesdays at 4.30pm

Designed for senior secondary and tertiary teachers

and students, however all are welcome.

Bookings recommended • Free with exhibition entry

For teachers

Special teachers events

\$25 includes morning tea, exclusive early morning access to the exhibition and education materials 9am-12 noon

New Contemporary Galleries including the John Kaldor Family Gallery Saturday 4 June

The mad square Saturday 13 August

Important news

New Word Order writing competition entries close Friday 23 September

The Australian collection on the ground floor will be unavailable from mid July 2011 due to refurbishment and the Picasso exhibition. A selection of works in the collection can be viewed in the temporary exhibitions gallery, upper level from mid September.

Access

Free programs and resources

for K-6 and 7-12 students

Blind and vision impaired

guided sensory tours

Deaf and hearing impaired

Auslan-interpreted discussion tours

Intellectual disabilities

Starting with Art tour and workshop

Outreach

Low Socio-Economic Status (SES) School Communities

Open Gallery

provides free excursions to the Art Gallery of New South Wales for Year 7 students. Supported by Optus

Artside-in! provides innovative professional learning opportunities for teachers and senior students.

Brett Whiteley Studio

A unique opportunity to experience the studio and gallery of this important Australian artist.

Practical workshops and discussion tours every Thursday and Friday for booked school groups.

Essential information

[www.artgallery.nsw.gov.au/education](http://www.artgallery.nsw.gov.au/education)

Ticketed exhibition entry

for booked school groups \$5 per student

Education materials available at

[www.artgallery.nsw.gov.au/education/education-materials](http://www.artgallery.nsw.gov.au/education/education-materials)

Bookings and pre-payment essential for all programs.

Booking form, pre-payment options and details:

[www.artgallery.nsw.gov.au/ed/book](http://www.artgallery.nsw.gov.au/ed/book)

Bookings only accepted in writing

via fax 02 9225 1842 or online

Limited student numbers per hour

Enquiries: tel 02 9225 1740 fax 02 9225 1842

pp@ag.nsw.gov.au

For the full range

of all programs and details, visit [www.artgallery.nsw.gov.au](http://www.artgallery.nsw.gov.au)

Produced by the Public Programs Department of the Art Gallery of NSW